

**Top to bottom:** Historic photos of Daggett Rock from the Phillips Historical Society archives. Visit to see more.

### Preserving History, Protecting Nature

Preserving History, Protecting Nature  
Daggett Rock is owned by the Phillips Historical Society and stewarded by the High Peaks Alliance. Help us protect this gem by staying on marked trails and respecting private property boundaries. Please carry-in, carry-out.

### Phillips Historical Society

The Phillips Historical Society preserves the history of the town and region, engaging the community through exhibits, programs, and resources. The Museum is open the first and third Sundays of the month, May through October, 1 PM - 4 PM, or by appointment. Connect with them at [PhillipsHistoricalSocietyMuseum.org](http://PhillipsHistoricalSocietyMuseum.org).

### High Peaks Alliance

The Alliance's mission is to ensure and enhance public access and opportunities for recreation in the High Peaks. To get involved stewarding Daggett Rock connect with them at [HighPeaksAlliance.org](http://HighPeaksAlliance.org).



### Directions

From Rt 142 in Phillips, take Wheeler Hill Rd 2.3 miles to the signed trailhead.

Parking is at a small pull-off on Wheeler Hill Road opposite the trailhead.

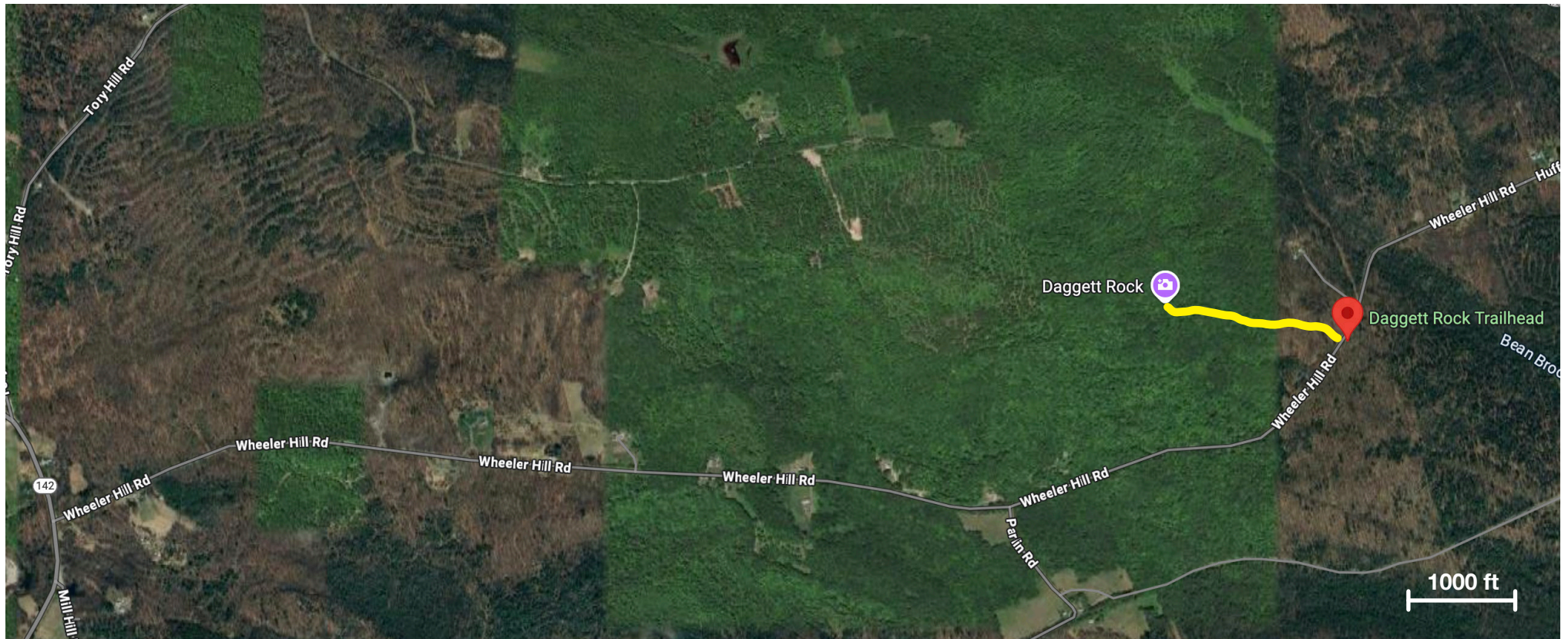
## DAGGETT ROCK TRAIL

PHILLIPS, MAINE

Discover Daggett Rock, a welcoming community gem, open to all and perfect for every age to explore and enjoy.

[HighPeaksAlliance.org](http://HighPeaksAlliance.org)  
[PhillipsHistoricalSocietyMuseum.org](http://PhillipsHistoricalSocietyMuseum.org)





### The Trail to Daggett Rock

The trail to Daggett Rock is a short but engaging journey, spanning 0.3 miles one way with an easy to moderate difficulty level. It features a gradual climb through a mixed forest, culminating in the breathtaking sight of the split boulder. Once you arrive at Daggett Rock, explore around and through the rock's crevices.

### A Geological Marvel

Daggett Rock stands as a testament to the power of the Ice Ages. Estimated at 8,000 tons, it is Maine's largest glacial erratic. Carried by the glacier over 11.4 miles from Saddleback Mountain, it was deposited over 14,000 years ago. This granite boulder measures 80 feet long, 30 feet wide, and 25 feet high.

