



# SHILOH POND COMMUNITY FOREST

KINGFIELD, MAINE

## Welcome to Shiloh Pond

Shiloh Pond Community Forest is Kingfield's first publicly owned land. This 215-acre "Community Forest" was a three-year project led by the High Peaks Alliance, the Trust for Public Land, and Kingfield residents.

For decades, Shiloh Pond was privately owned yet accessible to the public. When it went up for sale, residents feared it might be developed, restricting public access.

Today, the Shiloh Pond Community Forest is conserved and open for non-motorized recreational use.

## Guidelines

- Carry In/Carry Out
- Hunting and Fly Fishing are welcome
- Store boats in the designated area

## Prohibited Activities

- Motorized boats
- Off-road and Motorized vehicles
- Fires
- Overnight camping

## Directions

From Kingfield: Turn off Route 27 onto Tufts Pond Road. The road will turn to dirt in 1.9 mi. Continue for another 0.9 mi. Turn left at the Shiloh Pond Road sign. Continue 0.3 mi to the parking area. Follow the path to Little Shiloh and Shiloh Ponds and continue on the trail to the waterfall.

## Shiloh Pond Committee

The Town of Kingfield enthusiastically accepted the gift of Shiloh Pond, and the Selectboard established the Shiloh Pond Committee to oversee its management. The committee serves as the long-term steward, dedicated to preserving its natural resources and traditional uses. Learn more:

[KINGFIELDME.ORG/SHILOH-POND](https://kingfieldme.org/shiloh-pond)

## High Peaks Alliance

The Alliance works to keep the High Peaks Region open to use through conservation, access, and collaboration. Learn more:

[HIGHPEAKSALLIANCE.ORG](https://highpeaksalliance.org)



This property provides excellent paddling, fly fishing, and birding opportunities.

[HIGHPEAKSALLIANCE.ORG](https://highpeaksalliance.org)  
[KINGFIELDME.ORG/SHILOH-POND](https://kingfieldme.org/shiloh-pond)








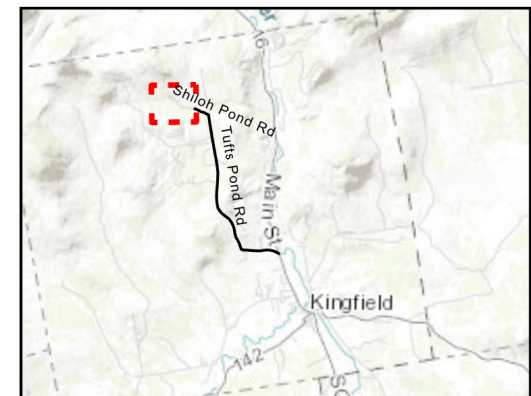
**SUPPORT** The High Peaks Alliance maintains this property. Please consider supporting our efforts with a donation at [HighPeaksAlliance.org](http://HighPeaksAlliance.org).

# Shiloh Pond

Town of Kingfield Property

## Legend

-  Canoe Launch
-  Trailhead
-  Waterfall
-  Property Boundary
-  Hiking Trail (.85 miles)



Follow Tuft's Pond Rd .9 miles from end of pavement, turn left on Shiloh Pond Rd and park in .3 miles



[www.highpeaksalliance.org](http://www.highpeaksalliance.org)